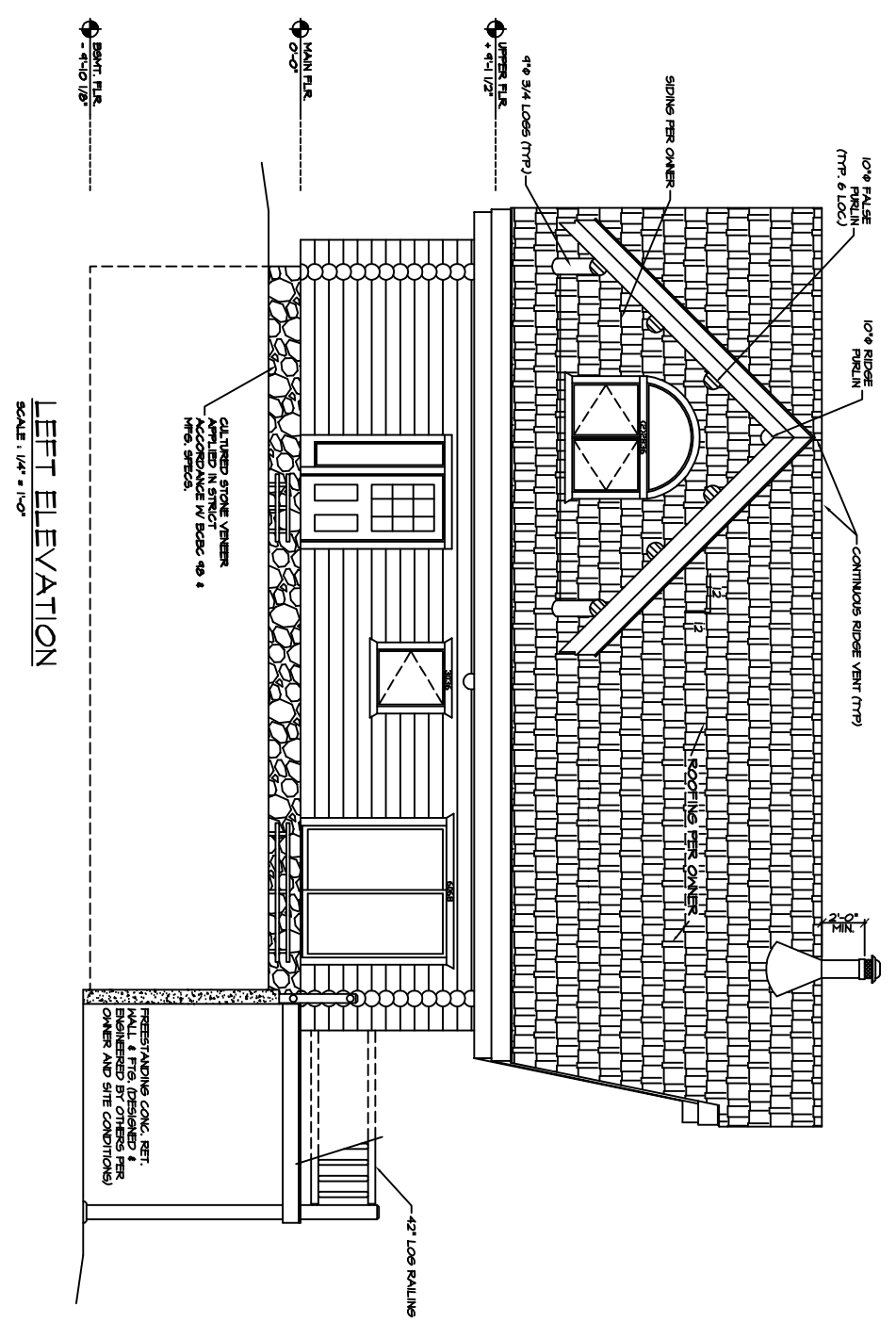
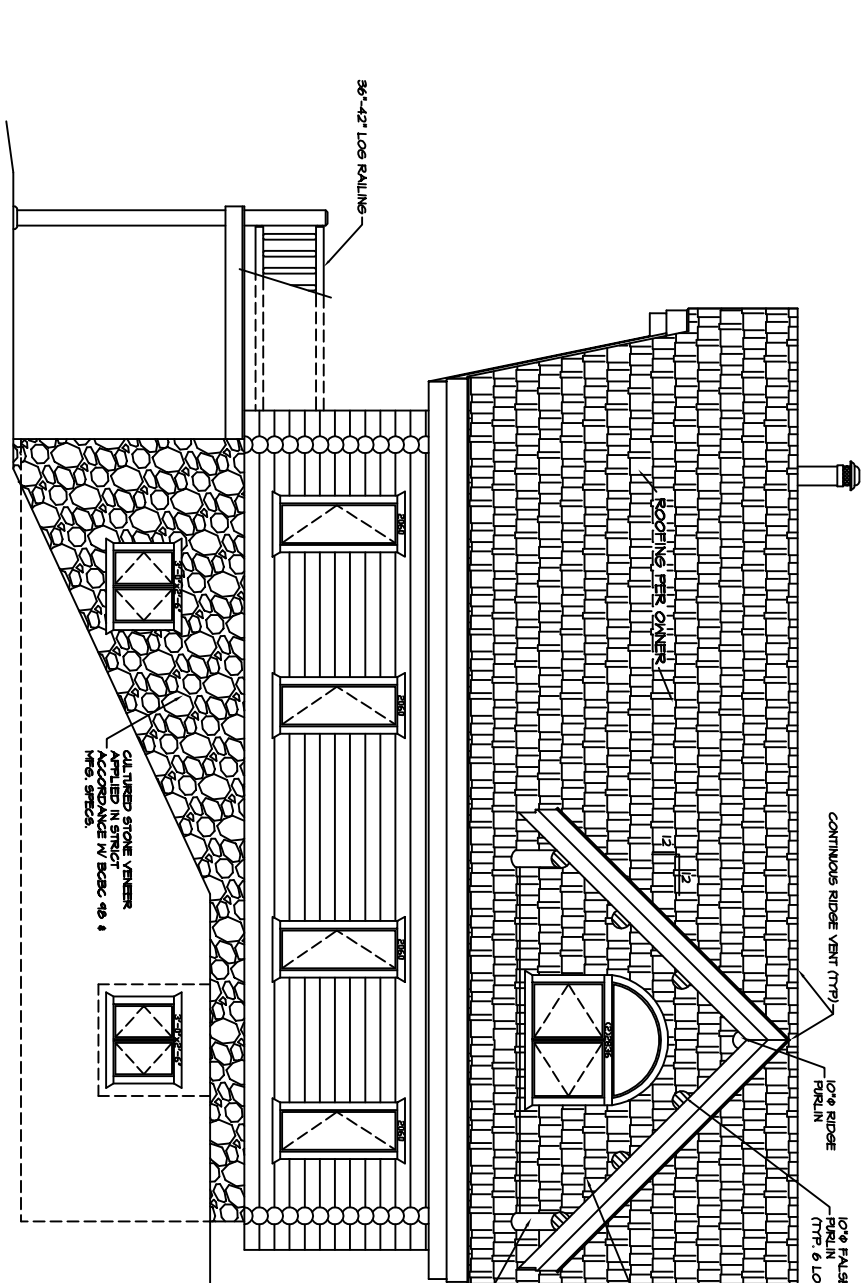


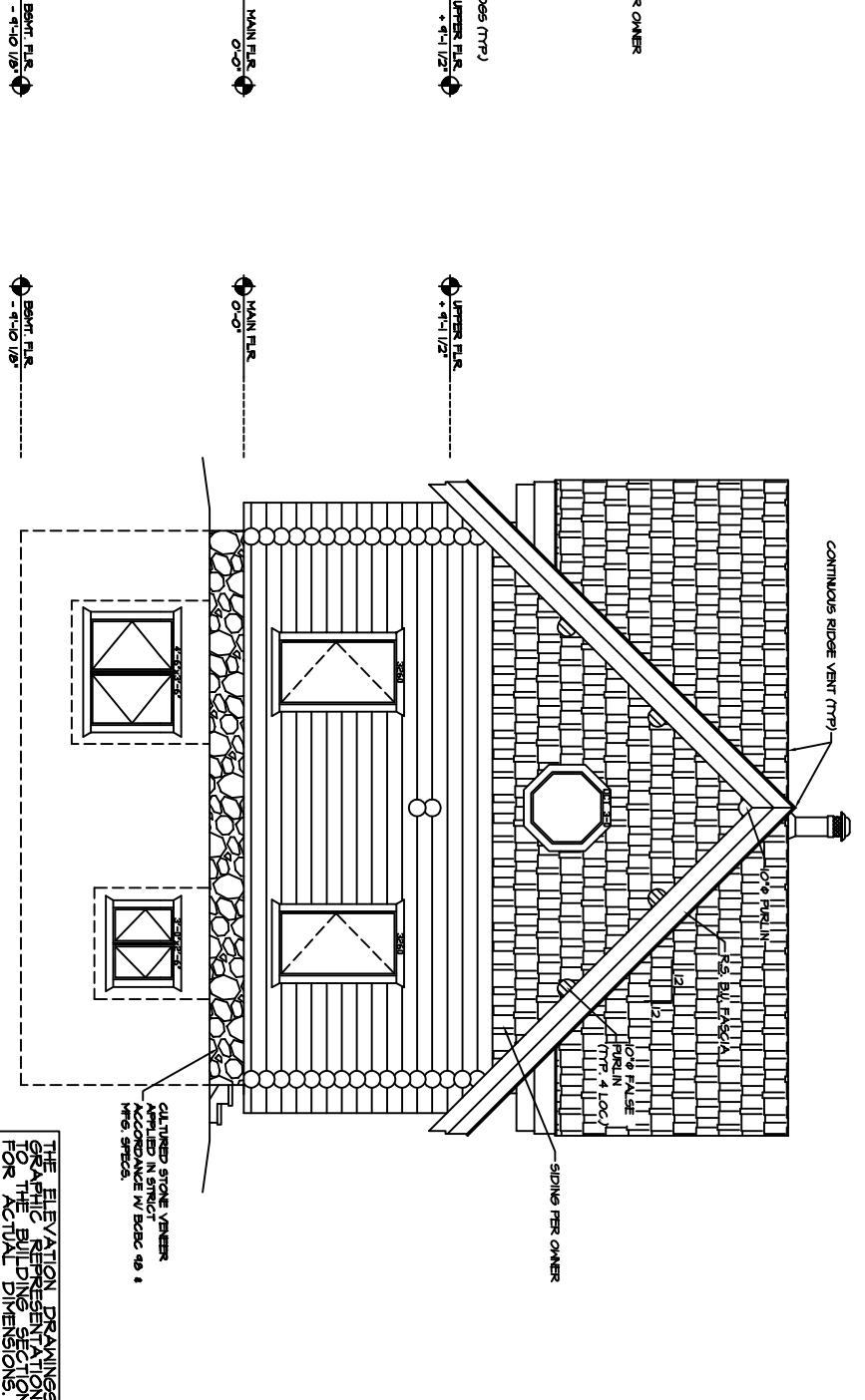
FRONT ELEVATION
SCALE: 1/4" = 1'-0"



LEFT ELEVATION
SCALE: 1/4" = 1'-0"



RIGHT ELEVATION
SCALE: 1/4" = 1'-0"



REAR ELEVATION
SCALE: 1/4" = 1'-0"

NOTE: EFFORT HAS BEEN MADE TO ASSURE THE ACCURACY OF DIMENSIONS AND DETAILS; HOWEVER, IT IS THE RESPONSIBILITY OF THE BUILDER TO VERIFY ALL DIMENSIONS.

THE ELEVATION DRAWINGS ARE ONLY TO THE BUILDING SECTION PAGES FOR ACTUAL DIMENSIONS.
ALL WINDOW OPENINGS, LOG TRUSSES, LOG RAFTERS, POSTS AND GABLE ENDS REQUIRE FIELD CUTTING.

SHEET 2 of 9	LOG SIZE 9"φ	JOB # -	DATE -	QuickDraw Design BRADLEY D. LETZIG brad@quickdrawdesign.net 450 BROTHERS WAY CORVALLIS, MT 59828 Phone # (406) 370-7046 Fax # (866)507-2289		THE GRIZZLY RIDGE ELEVATIONS		DRAWN BY: BLM	REV. REV.