

Trout Creek Homes & Cottages

By Trout Creek International Homes

Structural Insulated Panels | Pre-Built | Pre-Insulated | Pre-Packaged | Ready for Delivery | Easy Assembly

CABIN DESCRIPTION

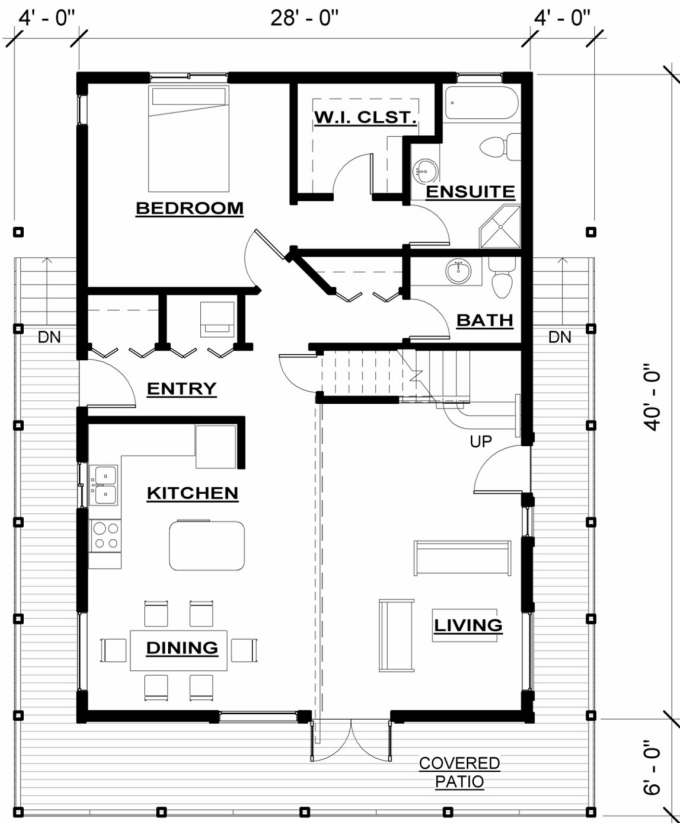
- 18' x 40'
- 2 Bedrooms + Loft
- 1 Bath + Ensuite
- 9' High Ceilings

WHAT'S INCLUDED

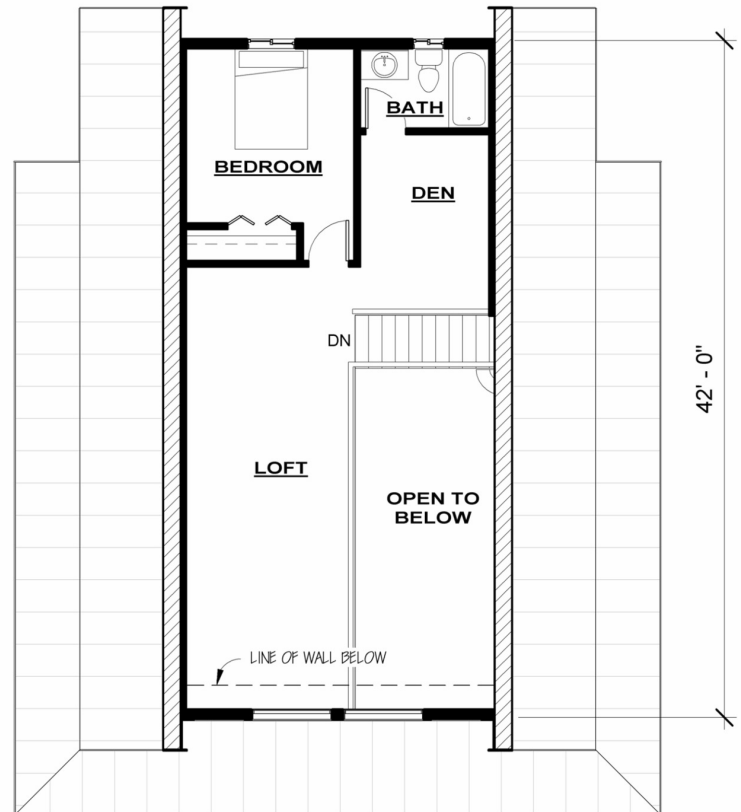
- 6" S.I.P. Walls
- 8" S.I.P. Roof (R 32)
- Engineered Subfloor
- 1"x 6" T&G for Vaulted Ceilings & Soffits
- Timber Ridge Beam
- 1"x 8" Beveled Cedar Siding
- Douglas Fir Fascia
- Construction Drawings

OPTIONS

- Variety of Wood Siding
- 5/4" Cedar Decking
- Deck Posts
- Interior Framing Package
- Wood Window / Door Trims
- 10" S.I.P. Roof (R 40)



MAIN FLOOR



SECOND FLOOR